

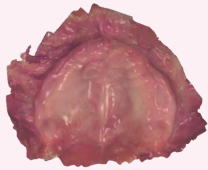



## Now you have the perfect edentulous intraoral scan solution with **Scan Retractor**

*Complete removal of obstacles to enhance the accuracy and efficiency to your intraoral scanning practices*

### Key features

- Precise recognition of maxillar open repository and archive
- Controlling the cheek and tongue mobility at mandibular open repository and archive
- Providing the exact reference point of marginal scanning area

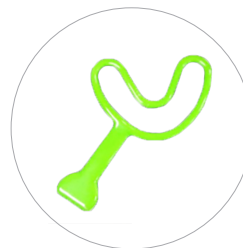
	Maxillar open repository and archive	Mandibular open repository and archive
Without scan retractor application	 <p>Inaccurate recognition of boundary due to attached gingiva and aveloar mucosa</p>	 <p>Critical interference to intraoral scanning practices caused from mobility of the tongue</p>
With scan retractor application	 <p>Exact image recognition at maxillar open repository and archive</p>	 <p>efficient control of tongue mobility.</p>

### Packaging

Maxillar open repository and archive - Set (5 Piece)  
Mandibular open repository and archive - Set (5 Piece)



Maxillar open repository and archive

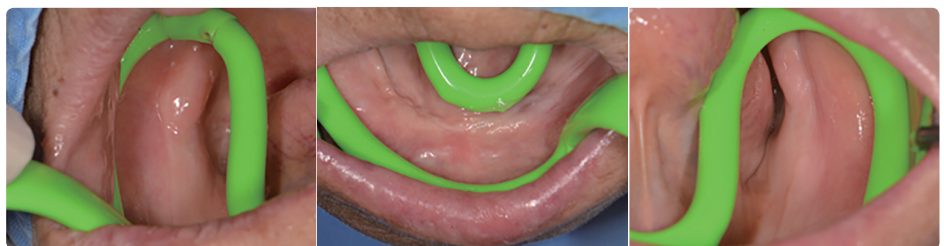


Mandibular open repository and archive



### Example

(Mandibular open repository and archive)



Select the size of scan retractor in accordance to the patient's arch size and bend to shape customized application to your practices.

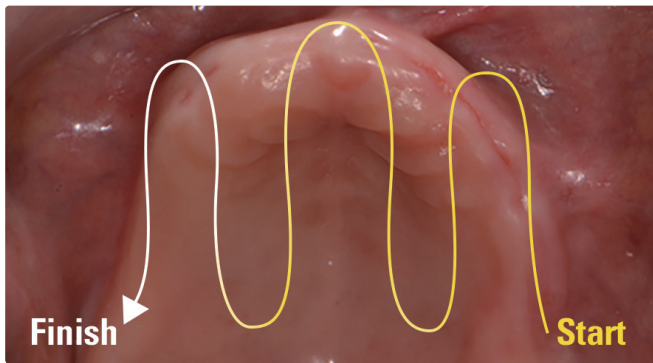
## Application guidance

### Instruction



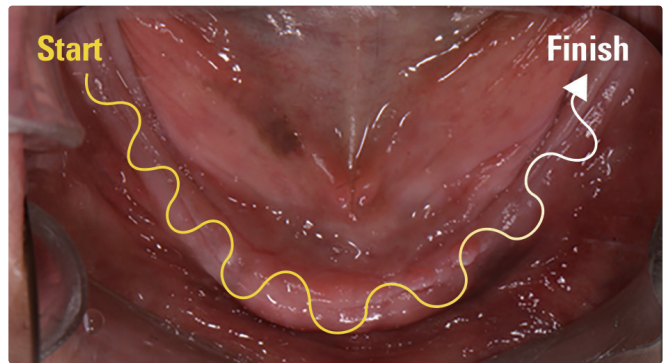
- ① Apply the excessive moisture to intraoral contact area with scan retractor.
- ② Placing the retractor from the side edge of inner archieve while retaining the proper space through using fingers.
- ③ Ensure the position of retractor that no suppressed area at inner lip or cheek.
- ④ Hole the handle tight in order not to creat any movements.
- ⑤ Remove with care after not to creat any damages to patient's dried lips after the use.

### Scanning Process



#### Maxillar open repository and archieve

Left maxillar prosterior area → Anterior area →  
Left prosterior open repository area → Central open repository to  
anterior area → From anterior to right open repository area →  
From anterior to right prosterior area

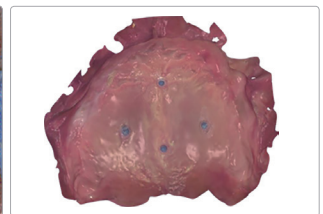
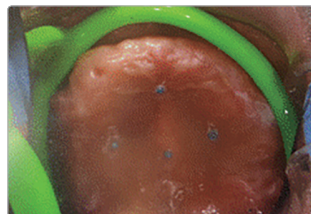
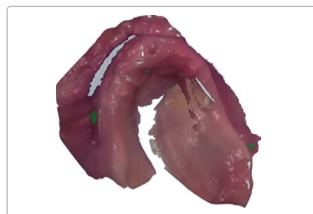
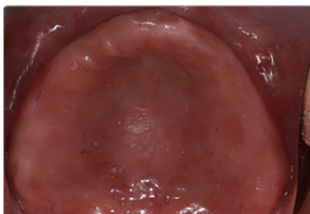


#### Mandibular open repository and archieve

Right mandibular prosterior area → Anterior area →  
Left mandibular prosterior area  
(Narrow to wide/Buccal to lingual zigzag trajectory movement)

### Caution

- ① Excessive flat surface at open repository area is hard to detect.



(Apply the flow resin to open repository area before scanning)

- ② Prohibition of scan retractor movement is essential and pay attention to extra expansion or suppress at soft tissue.
- ③ Guide the breathing through nose at patient in order to minimize the oral movement.